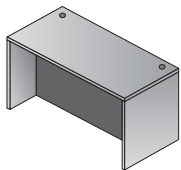


Modular laminate casegoods provide extensive selection, capability and value. Enter Napa in both Cherry and Mahogany wood grain laminates with impact-resistant 3mm PVC edges with wood grain design and tri-groove design detail. From executive and management offices to task environments and high-density areas, Napa excels for today's businesses.

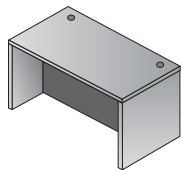
*New Espresso and Grey coloration shown on pages 24-25.*



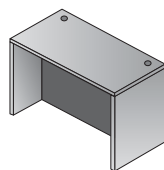
**Finish Key**  
 CHY - Cherry Finish  
 MAH - Mahogany Finish



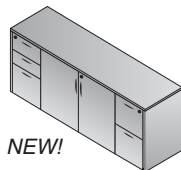
**NAPA01**  
**Desk Shell**  
 70.5"x36.5"x29"  
 CU:6.4 WT:162.0  
 List Price: \$510



**NAPA02**  
**Desk Shell**  
 66"x30"x29"  
 CU:5.1 WT:135.6  
 List Price: \$415

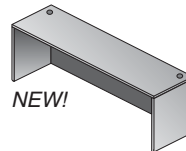


**NAPA03**  
**Desk Shell**  
 60"x30"x29"  
 CU:4.6 WT:127.9  
 List Price: \$390



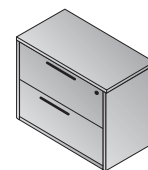
**NEW!**

**NAPA10**  
**Storage Credenza**  
 72"x22"x29"  
 CU:30.6 WT:220.0  
 List Price: \$1650  
*Ships Assembled*

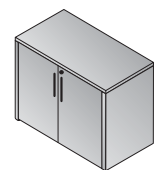


**NEW!**

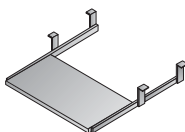
**NAPA11**  
**Credenza Shell**  
 66"x24"x29"  
 CU:4.6 WT:116.6  
 List Price: \$340



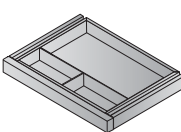
**NAPA12**  
**Lateral File**  
 36"x22"x29"  
 CU:15.5 WT:149.9  
 List Price: \$685  
*Ships Assembled*



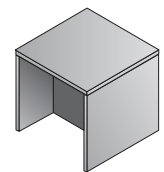
**NAPA13**  
**Storage Cabinet**  
 36"x22"x29"  
 CU:5.5 WT:117.9  
 List Price: \$440



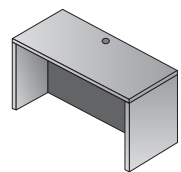
**NAPA14**  
**Keyboard Tray**  
 26"x12"  
 CU:0.6 WT:13.2  
 List Price: \$70



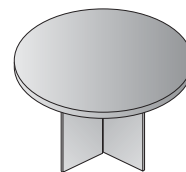
**NAPA15**  
**Center Drawer**  
 20"x15"  
 CU:0.8 WT:8.8  
 List Price: \$70



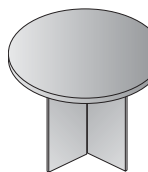
**NAPA20**  
**End Table**  
 24"x24"x20"  
 CU:2.0 WT:49.6  
 List Price: \$250



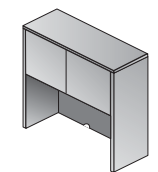
**NAPA21**  
**Desk Shell**  
 48"x30"x29"  
 CU:4.8 WT:110.2  
 List Price: \$375



**NAPA23**  
**Round Table**  
 47"Dia.x29"H  
 CU:6.8 WT:109.1  
 List Price: \$550

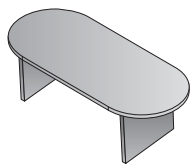


**NAPA27**  
**Round Table**  
 42"Dia.x29"H  
 CU:5.4 WT:94.8  
 List Price: \$475

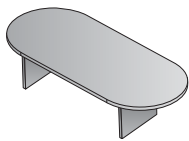


**NAPA34**  
**Hutch with Doors**  
 48"x15"x36"  
 CU:4.2 WT:101.4  
 List Price: \$425

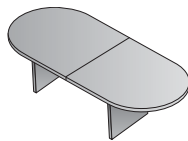
# Napa Cherry & Mahogany



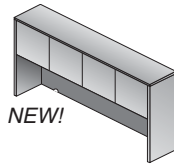
**NAP35**  
Conference Table  
71"x35"x29"  
CU:6.7 WT:138.9  
List Price: \$550



**NAP36**  
Conference Table  
95"x44"x29"  
CU:10.8 WT:189.6  
List Price: \$715

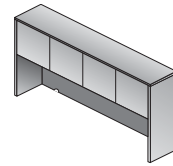


**NAP37**  
Conference Table  
120"x48"x29"  
CU:11.3 WT:246.9  
List Price: \$980

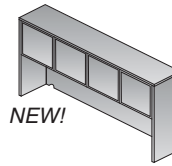


NEW!

**NAP39**  
Overhead Storage  
66"x15"x36"  
CU:5.7 WT:132.0  
List Price: \$490

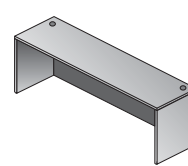


**NAP40**  
Part-Assembled  
Hutch  
71"x15"x36"  
CU:15.0 WT:150.0  
List Price: \$900

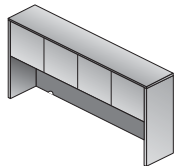


NEW!

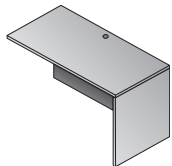
**NAP42**  
Overhead with Glass  
Doors  
71"x15"x36"  
CU:6.4 WT:135.3  
List Price: \$620



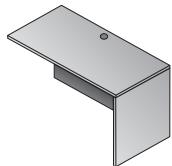
**NAP43**  
Credenza Shell  
71"x24"x29"  
CU:5.1 WT:122.4  
List Price: \$360



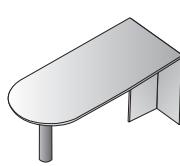
**NAP44**  
Overhead Storage  
71"x15"x36"  
CU:6.0 WT:140.0  
List Price: \$560



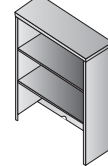
**NAP45**  
Return Shell  
47"x23.5"x29"  
CU:3.8 WT:90.4  
List Price: \$320



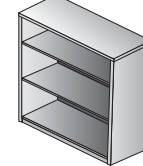
**NAP46**  
Return Shell  
42"x20"x29"  
CU:3.4 WT:88.2  
List Price: \$265  
*\*\*Use with NAP76 Ped*



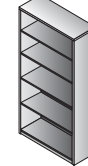
**NAP47**  
Bullet  
71"x36"x29"  
CU:6.6 WT:116.8  
List Price: \$500



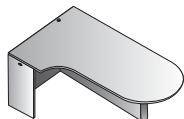
**NAP53**  
Open Hutch  
36"x14"x36"  
CU:3.9 WT:81.6  
List Price: \$300



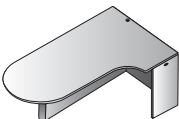
**NAP55**  
3-Shelf Bookcase  
36"x14"x42"  
CU:4.4 WT:98.1  
List Price: \$360



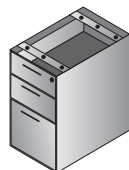
**NAP56**  
5-Shelf Bookcase  
36"x14"x65"  
CU:6.8 WT:149.9  
List Price: \$500



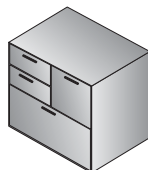
**NAP57L**  
Left Computer Corner  
Bullet  
71"x30"/42"x29"  
CU:8.2 WT:145.5  
List Price: \$630



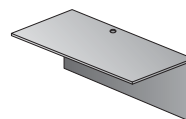
**NAP57R**  
Right Computer  
Corner Bullet  
71"x30"/42"x29"  
CU:8.2 WT:145.5  
List Price: \$630



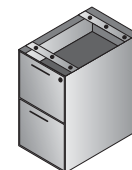
**NAP65**  
BBF Ped-Desk  
15.5"x22"x28"  
CU:7.0 WT:78.3  
List Price: \$500  
*Ships Assembled*



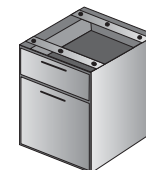
**NAP69**  
MultiFile Ped  
31"x23"x29"  
CU:13.6 WT:154.3  
List Price: \$890  
*Ships Assembled*



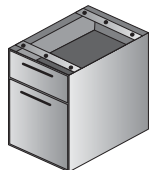
**NAP70**  
Bridge  
47"x23.5"x29"  
CU:2.8 WT:70.5  
List Price: \$250



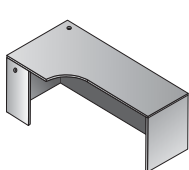
**NAP74**  
FF Ped-Desk  
15.5"x22"x28"  
CU:7.0 WT:73.9  
List Price: \$450  
*Ships Assembled*



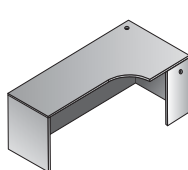
**NAP76**  
Hanging Ped-20" Return  
15.5"x18.5"x21"  
CU:4.5 WT:50.7  
List Price: \$370  
*Ships Assembled*



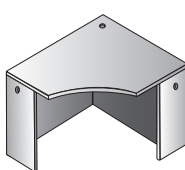
**NAP80**  
Hanging Ped-Desk  
15.5"x22"x21"  
CU:5.3 WT:60.6  
List Price: \$370  
*Ships Assembled*



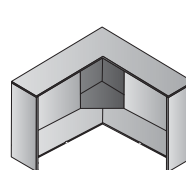
**NAP82L**  
Left Corner Credenza  
71"x36"x29"  
CU:6.4 WT:148.8  
List Price: \$525



**NAP82R**  
Right Corner  
Credenza  
71"x36"x29"  
CU:6.4 WT:148.8  
List Price: \$525



**NAP83**  
Corner Unit  
42"x42"x29"  
CU:5.0 WT:125.7  
List Price: \$395



**NAP84**  
Corner Hutch  
42"x42"x36"  
CU:7.1 WT:142.2  
List Price: \$580



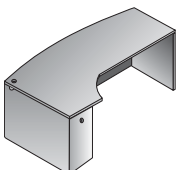
NEW!

**NAP85**  
Mobile BBF Ped  
14"x22"x27H"  
CU:7.0 WT:73.9  
List Price: \$625  
*Ships Assembled*

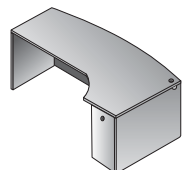


NEW!

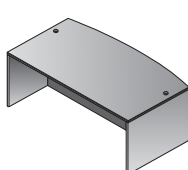
**NAP86**  
Mobil FF Ped  
14"x22"x27H"  
CU:7.0 WT:73.9  
List Price: \$625  
*Ships Assembled*



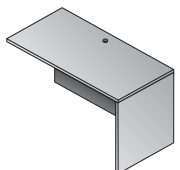
**NAP87L**  
Left Corner Desk  
71"x30"/48"x29"  
CU:8.4 WT:184.1  
List Price: \$650



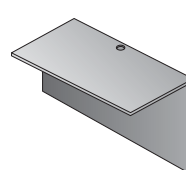
**NAP87R**  
Right Corner Desk  
71"x30"/48"x29"  
CU:8.4 WT:184.1  
List Price: \$650



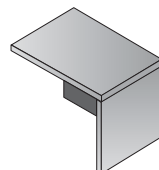
**NAP89**  
Bow Desk Shell  
71"x41"/42"x29"  
CU:7.3 WT:173.1  
List Price: \$570



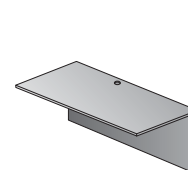
**NAP92**  
Return Shell  
35"x23.5"x29"  
CU:2.9 WT:73.9  
List Price: \$255



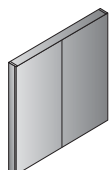
**NAP93**  
Bridge  
35"x23.5"x29"  
CU:2.2 WT:56.2  
List Price: \$205



**NAP96**  
Return Shell  
42"x23.5"x29"  
CU:3.2 WT:81.0  
List Price: \$285



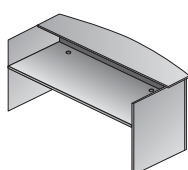
**NAP98**  
Bridge  
42"x23.5"x29"  
CU:2.5 WT:63  
List Price: \$220



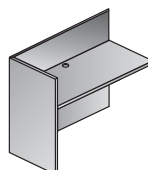
**NAP100**  
Presentation Board  
48"x48"  
CU:8.5 WT:101.4  
List Price: \$585  
*Ships Assembled*



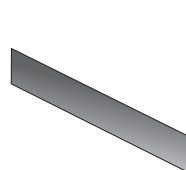
**NAP109**  
Four-Drawer Lateral  
File  
36"x22"x56"  
CU:28.5 WT:235  
List Price: \$1590  
*Ships Assembled*



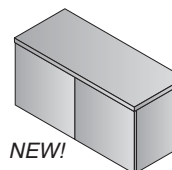
**NAP122**  
Reception Desk Shell  
71"x30"/36"x42"  
CU:8.3 WT:207.2  
List Price: \$680



**NAP125**  
Reception Return  
Shell  
42"x24"x41"  
CU:4.1 WT:100.3  
List Price: \$345

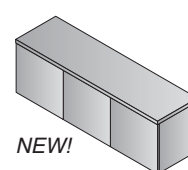


**NAPT B-3**  
Tackboard for  
NAP44,42,40 &  
SON44 & 40  
Black Fabric  
CU:1.2 WT:10.2  
List Price: \$150



NEW!

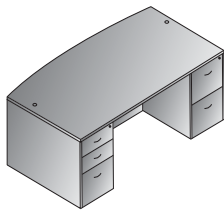
**NAPWM36**  
Wall-Mount Overhead  
36"x15"x17"  
CU:8.8 WT:55  
List Price: \$335  
*Ships Assembled*



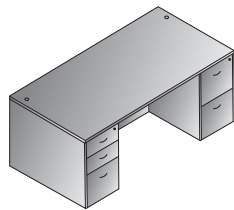
NEW!

**NAPWM48**  
Wall-Mount Overhead  
48"x15"x17"  
CU:8.8 WT:70.4  
List Price: \$425  
*Ships Assembled*

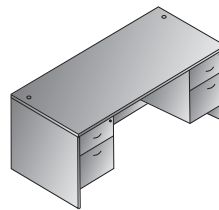
# Napa Cherry & Mahogany



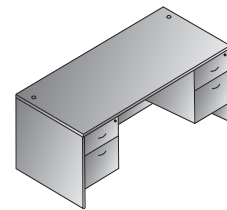
**Bow Top Desk 72x41**  
**NAPTYP1**  
 21.3 cu. ft. 325.3 lbs.  
 Consists of: NAP-89,65,74  
 \$1,520



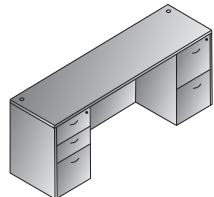
**Double Ped Desk 71x35**  
**NAPTYP2**  
 20.4 cu. ft. 314.2 lbs.  
 Consists of: NAP-01,65,74  
 \$1,460



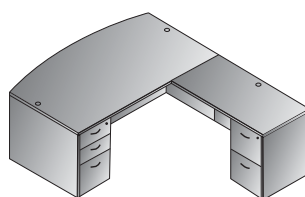
**Double Ped Desk 66x30**  
**NAPTYP3**  
 15.7 cu. ft. 256.8 lbs.  
 Consists of: NAP-02,80,80  
 \$1,155



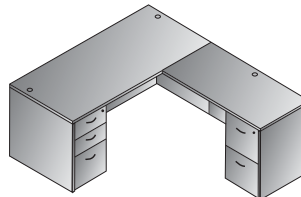
**Double Ped Desk 60x30**  
**NAPTYP4**  
 15.2 cu. ft. 249.1 lbs.  
 Consists of: NAP-03,80,80  
 \$1,130



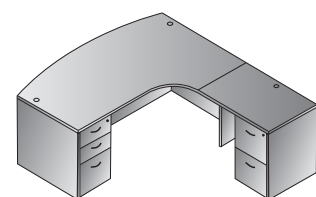
**Kneespace Credenza 72x24**  
**NAPTYP5**  
 19.1 cu. ft. 274.6 lbs.  
 Consists of: NAP-43,65,74  
 \$1,310



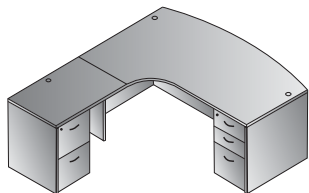
**L Shape w/Bow 71x89**  
**NAPTYP8**  
 25.1 cu. ft. 415.7 lbs.  
 Consists of: NAP-89,65,45,74  
 \$1,840



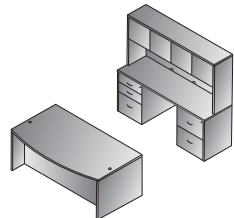
**L Shape 66x78**  
**NAPTYP9**  
 22.9 cu. ft. 378.2 lbs.  
 Consists of: NAP-02,65,45,74  
 \$1,685



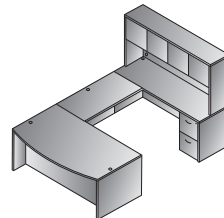
**Right L Shape w/Corner 71x83**  
**NAPTYP10R**  
 25.3 cu. ft. 410.2 lbs.  
 Consists of: NAP-87R,65,92,74  
 \$1,855



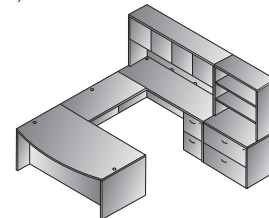
**Left L Shape w/Corner 71x83**  
**NAPTYP10L**  
 25.3 cu. ft. 410.2 lbs.  
 Consists of: NAP-87L,65,92,74  
 \$1,855



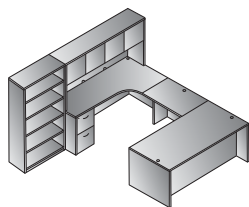
**Executive Office**  
**NAPTYP11**  
 46.4 cu. ft. 739.9 lbs.  
 Consists of: NAP-89,65,74,43,  
 65,74,44  
 \$3,390



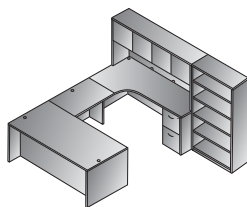
**U Shape w/Hutch 72x113**  
**NAPTYP12**  
 35.3 cu. ft. 658.2 lbs.  
 Consists of: NAP-89,65,70,43,  
 74,44  
 \$2,690



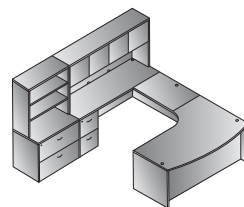
**U w/Hutch + Storage 108x113**  
**NAPTYP13**  
 54.6 cu. ft. 889.7 lbs.  
 Consists of: NAP-89,65,70,  
 43,74,44,12,53  
 \$3,675



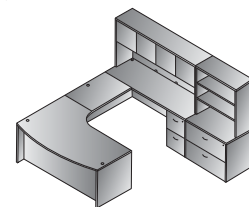
**Left U + Bookcase 107x107**  
**NAPTYP14L**  
 41.8 cu. ft. 809.1 lbs.  
 Consists of: NAP-01,65,93,  
 82R,74,44,56  
 \$3,250



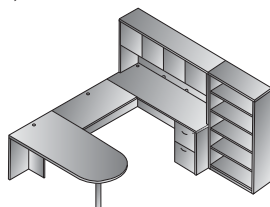
**Right U + Bookcase 107x107**  
**NAPTYP14R**  
 41.8 cu. ft. 809.1 lbs.  
 Consists of: NAP-01,65,93,  
 82L,74,44,56  
 \$3,250



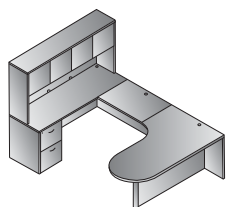
**Left U w/Corner + Storage**  
**NAPTYP15L**  
 55.1 cu. ft. 886.4 lbs.  
 Consists of: NAP-87L,65,93,43,  
 74,44,12,53  
 \$3,710



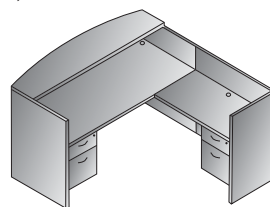
**Right U w/Corner + Storage**  
**NAPTYP15R**  
 55.1 cu. ft. 886.4 lbs.  
 Consists of: NAP-87R,65,93,43,  
 74,44,12,53  
 \$3,710



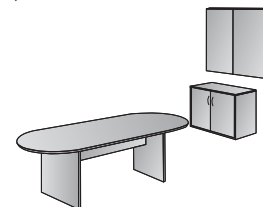
**U w/Bullet + Bookcase 107x108**  
**NAPTYP16**  
 34.3 cu. ft. 673.5 lbs.  
 Consists of: NAP-47,70,43,  
 74,44,56  
 \$2,620



**U w/Left Corner Bullet 71x101**  
**NAPTYP18L**  
 28.5 cu. ft. 538 lbs.  
 Consists of: NAP-  
 57L,93,43,74,44  
 \$2,205



**Reception Station 71x71x42H**  
**NAPTYP19**  
 22.2 cu. ft. 418.8 lbs.  
 Consists of: NAP-122,80,125,76  
 \$1,765



**Conference Group**  
**NAPTYP20**  
 24.8 cu. ft. 408.9 lbs.  
 Consists of: NAP-36,13,100  
 \$1,740

**Finish Key**  
**CHY** - Cherry Finish  
**MAH** - Mahogany Finish